

HIVEMANAGER NG PRIVATE CLOUD

Aerohive's Next-Generation Network Management Solution for large-scale On-Premises Deployments

HiveManager NG Private Cloud sets a new standard for simplicity and flexibility in unified networking. An intuitive user interface presents powerful network management tools like streamlined configuration workflows, real-time client and event monitoring, simplified troubleshooting and versatile RF planner tools. It also provides access to Aerohive APIs that enable tailored business applications. HiveManager truly is a platform for a next-generation network focused on mobility.

HiveManager NG Private Cloud is a unique deployment option for large MSPs and enterprise customers who require the scale and flexibility of our Hive Manager NG Public Cloud solution, but with the added control of deploying it in their own data center. HiveManager NG Private Cloud is designed for large deployments as of 5,000 network devices and up.

FEATURES & BENEFITS

Bringing up a network of Aerohive devices is as simple as plugging them in and opening a browser to the Aerohive Cloud Services Platform. Aerohive devices connect to HiveManager NG using secure protocols that traverse NAT and firewalls. With HiveManager NG, you can deploy and configure an enterprise-class network within 15 minutes. In addition to sophisticated network management functionality, HiveManager NG provides value beyond connectivity with advanced mobility features. Key benefits include:

Dashboard: Intuitive, visual dashboard with contextual filters for a comprehensive overview of network assets, status cards with key metrics, application and data usage as well as user activity.

Application Visibility and Control: Visibility and control of application usage on the network, for professional and recreational applications.

Monitoring: Real-time view of devices, clients, alarms and events. Ability to take informed action on devices immediately from the monitoring interface.

HiveManager is available in Aerohive's **Select** and **Connect** solution tiers. In Connect, it is optimized for customers who desire enterprise-grade connectivity with a streamlined user experience and simplicity that matches their operating model.

The Select network management solutions offer the full capabilities of the HiveManager platform for larger organizations with comprehensive security, policy, analytics and troubleshooting requirements. HiveManager allows administrators to start with Connect and seamlessly upgrade to Select as their requirements evolve.

Simplified Deployment: Guided workflows for creating and deploying network policies, with optional advanced configuration

Troubleshooting: Help-desk optimized interface to triage historical and real-time client problems with actionable data to reduce escalation and provide a better end-user experience.

Unified Network Management: Single-pane-of-glass management of wireless and wired devices.

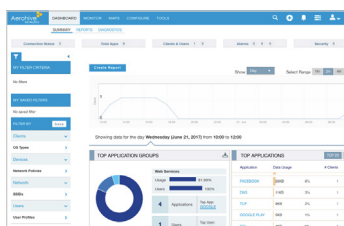
Multi-tenancy Capability: Ability to manage multiple customer accounts from one master account.

Open APIs: Access to Aerohive's monitoring, identity and configuration APIs. Presence and location APIs available with an optional upgrade to the Insight solution.

Guest Access: Onboarding and management of visitor and employee personal devices, included in HiveManager NG.

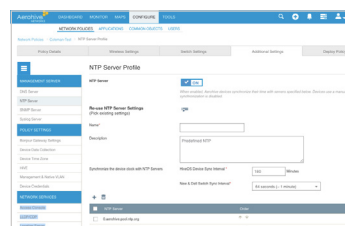
HIVEMANAGER NG PRIVATE CLOUD – QUICK VIEW

DASHBOARDS



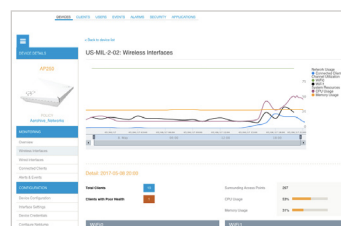
Powerful dashboard with contextual filters and time range slider provides current and historical views, application visibility, client count, device data usage, and ability to drilldown to 360 degree views of network policy, device, application, client and user.

STREAMLINED CONFIGURATION



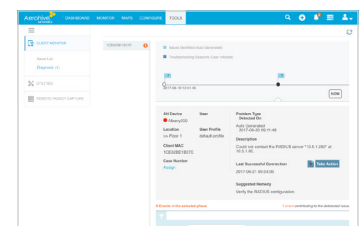
Streamlined device and network configuration with task-based policy workflows enable configuration of a mobility network from sign-up to deployment within 15 minutes.

CENTRALIZED MANAGEMENT



Centralized network management with unified policy and monitoring for access points and switches with context-aware user policies.

TROUBLESHOOTING



Help-desk optimized troubleshooting interface enables historical and realtime troubleshooting, provides a problem summary and suggested remedies, and reduces problem escalation.

PRODUCT SPECIFICATIONS

Simplified Deployment

- Customer self-service sign-up
- Guided workflow for network policy deployment
- Interactive on-screen step-by-step guided configuration help
- RF planner with map import and export
- Ability to swap simulated APs with real Aerohive APs on RF planner map
- Devices automatically connect to HiveManager NG for provisioning
- Devices auto-provision with network policy and firmware updates

Centralized Configurations

- Guest Access functionality
- Device templates for switches and APs
- Aerohive device as RADIUS server or RADIUS proxy, and as DHCP server
- Centralized view of all configuration objects
- Ability to bulk edit device properties
- Ability to schedule firmware upgrade
- Bonjour gateway support
- Command Line Interface access to Aerohive devices
- Support for select Dell N-series switches
- Active directory/LDAP
- IPv6 support
- Syslog and SNMP server configuration
- Auto provisioning
- Layer 2 support for Aerohive VPN Gateway Virtual Appliance (VGVA)
- Multi-tenant capability: supports multiple virtual organizations
- SSID settings override at AP level

Centralized Policy Management

- Device classification by location & timezone
- Customer application definition
- Client classification by location, OS type, MAC address
- Multiple user profiles for each SSID
- Time-based firewall and QoS policy
- Application, network, and MAC Layer firewall policy rules
- WIPS policy for rogue AP detection

Dashboard

- Graphical widgets and status cards with drill-down capabilities
- Time range slider on dashboard for historical view
- 360° views of Aerohive network policies, AP, client devices, users and applications
- Global search function by network policy, MAC address, serial number, user or application name
- 7 days of historic monitoring and reporting data
- Interactive Network Summary Report with easy sharing
- Savable contextual filters by location, SSID, policy, user profile, and client OS type
- Presence analytics dashboard

Monitor

- WIPs history report
- Drill down capability from client list to client 360 view
- Device list with rich utilities for advanced configuration and investigation
- Real time client list with SNR, RSSI, data usage and connection status
- Savable and reusable filters shared across dashboard and monitor
- Alarm and event lists with historical and real-time data
- PCI 3.1 compliant reporting
- Rogue AP and rogue client monitoring
- Real-time data for connected clients and users
- Map based navigation

Guest Access

- On-boarding and management of visitor and employee personal devices
- Provides seven on-boarding workflows via Captive Web Portal, Kiosk and Guest Check-In applications
- Private PSK (PPSK), PSK and 802.1X (RADIUS) authentication
- Supports 3rd party and customized CWP for added deployment flexibility
- Social Login (Google, Facebook, LinkedIn)

Troubleshooting

- Help-desk optimized interface with problem summary and suggested remedy
- Dedicated Helpdesk user role for simple access management
- Real-time troubleshooting with probe messages and stage filters
- Historical troubleshooting with automatically detected issues
- Mark issue resolved or escalate issue with email notification
- Built-in command line interface
- RADIUS test
- AP technical data download
- VLAN probe tool for simplified troubleshooting of the wired network
- Optional packet capture analysis with partner solution CloudShark
- Email alerts for AP status changes, high CPU utilization, high memory usage

Supported Languages

- English, German, French, Japanese, Korean

Security and Privacy

- Role based access control
- Customer and network data is private and secure
- No customer data traverses Aerohive's network
- SSO for NG administrators (AD or GSuite credentials)
- Optional multi-factor authentication with Google Authenticator
- Support for Layer 2 IPsec VPN services

Supported Hardware Platforms

AP: 120, 121, 122, 130, 141, 150W, 170, 230, 245x, 250, 320, 330, 340, 350, 370, 390, 550, 1130

SR: 2024P, 2124P, 2148P, 2208P, 2224P, 2324P, 2348P

DEPLOYMENT SPECIFICATIONS

Minimum Hardware Specifications (Redundant Configurations)

HiveManager NG Private Cloud SM

- 22 VMs
- 60 physical CPU Cores
- 224 GB memory
- 2 TB storage (SSD, local storage)

HiveManager NG Private Cloud MD

- 26 VMs
- 76 physical CPU cores
- 280 GB memory
- 2 TB storage (SSD, local storage)

HiveManager NG Private Cloud L and XL

- Platform sizing depends on task distribution and load

Required Third-Party Software (Virtualization)

- VMware vSphere Enterprise 6.5

Capacity

HiveManager NG Private Cloud is offered in 4 tiers, from Small to X-Large. It supports deployments with up to 1,000 VHMs, 5,000 virtual organizations and up to 50,000 network devices.

Co-Management of Private Cloud Deployments

Private Cloud environments are installed and managed in cooperation with Aerohive's DevOps group and require an annual DevOps service contract.

PRODUCT SKUs

SKU	Description
AH-HMNG-PC	HiveManager NG Private Cloud software license
AH-NGCS-SL-1/3/5YR	HiveManager NG Cloud Subscription for 1 network device for 1/3/5 years
AH-NGPC-DO-SM/MD/L/XL-1Y	HiveManager NG Private Cloud Dev Ops subscription for Private Cloud tiers SM/MD/L/XL, for 1 year. Includes up to 12 upgrades and ongoing system monitoring and operational support for Private Cloud software.

Please contact your Aerohive sales representative to learn more about the HiveManager NG Private Cloud solution.

