

# HIVEMANAGER NG VIRTUAL APPLIANCE

## Aerohive's Next-Generation Network Management Solution for On-Premises Deployments

**HiveManager NG Virtual Appliance** sets a new standard for simplicity and flexibility in unified networking. An intuitive user interface presents powerful network management tools like streamlined configuration workflows, real-time client and event monitoring, simplified troubleshooting and versatile RF planner tools. It also provides access to Aerohive APIs that enable tailored business applications and systems integrations. HiveManager NG truly is a platform for a next-generation network focused on mobility.

HiveManager NG Virtual Appliance is an additional deployment option for HiveManager NG. It gives customers the flexibility to deploy the Hive-

Manager NG Virtual Appliance on-premises, in a single instance. High Availability configurations are also supported.

HiveManager NG is part of the Aerohive Select portfolio of advanced network management solutions. It offers the full capabilities of the HiveManager platform with set of next-generation features for monitoring, troubleshooting, security and access management. HiveManager NG is available as a Virtual Appliance (VA) for on-premises deployments, and in a public cloud version.

### FEATURES & BENEFITS

The HiveManager Virtual Appliance is an on-premises version of NG typically deployed in the customer's private network, in their data center. It has the same enterprise-grade network management functionality as the public cloud version. The difference lies in the installation and administration features specific to on-premises deployments.

Key benefits include:

**Dashboard:** Intuitive, visual dashboard with contextual filters for a comprehensive overview of network assets, status cards with network KPI, application and data usage as well as user activity.

**Application Visibility and Control:** Visibility and control of application usage on the network, for professional and recreational applications.

**Simplified Deployment:** Guided workflows for creating and deploying network policies, with optional advanced configuration.

**Monitoring:** Real-time view of devices, clients, alarms and events. Ability to take informed action on devices immediately from the monitoring interface.

**Troubleshooting:** Help-desk optimized interface to triage historical and real-time client problems with actionable data to reduce escalation and provide a better end-user experience.

**Unified Network Management:** Single-pane-of-glass management of wireless and wired devices.

**Open APIs:** Access to Aerohive's open APIs for Monitoring, Identity and Configuration services.

**Guest Access:** Onboarding and management of visitor and employee personal devices, included in HiveManager NG.

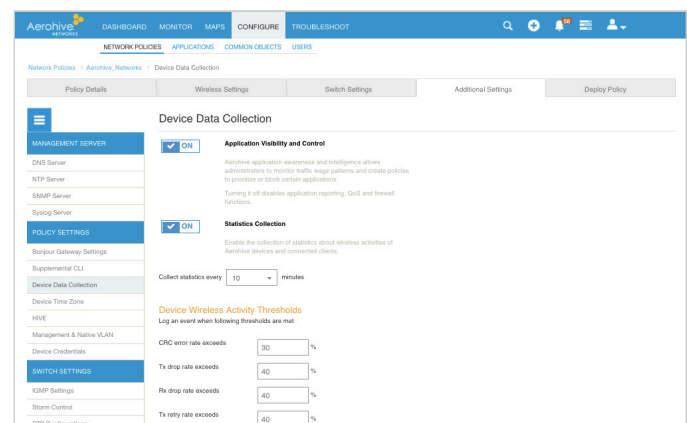
### HIVEMANAGER NG VIRTUAL APPLIANCE – QUICK VIEW

#### DASHBOARDS



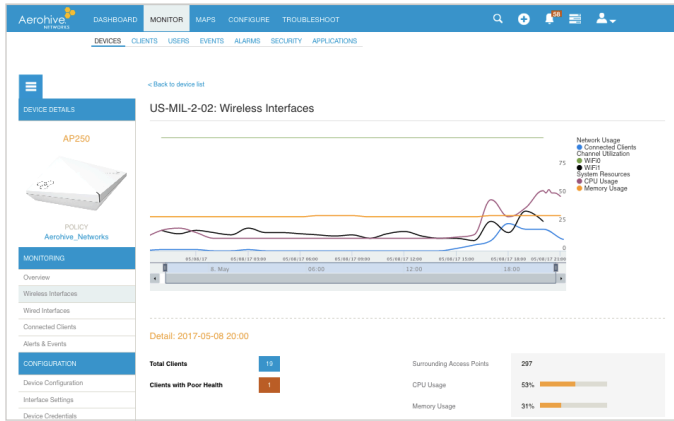
Powerful dashboard with contextual filters and time range slider provides current and historical views, application visibility, client count, device data usage, and ability to drilldown to 360 degree views of network policy, device, application, client and user.

#### STREAMLINED CONFIGURATION



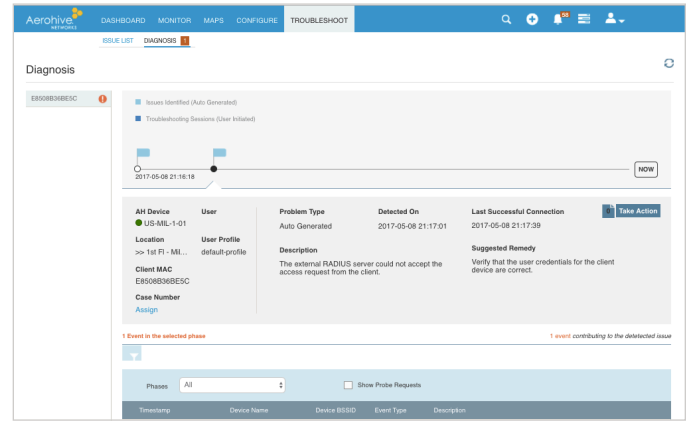
Streamlined device and network configuration with task-based policy workflows enable configuration of a mobility network from signup to deployment within 15 minutes.

CENTRALIZED MANAGEMENT



Centralized network management with unified policy and monitoring for access points and switches with context-aware user policies.

HISTORICAL AND REAL-TIME TROUBLESHOOTING



Help-desk optimized troubleshooting interface enables historical and realtime troubleshooting, provides a problem summary and suggested remedies, and reduces problem escalation.

PRODUCT SPECS

Simplified Deployment

- Guided workflow for network policy deployment
- Interactive on-screen step-by-step guided configuration help
- RF planner with map import and export
- Ability to swap simulated APs with real Aerohive APs on RF planner map
- Devices automatically connect to HiveManager NG for provisioning

Centralized Configurations

- Guest Access functionality
- Device templates for switches and APs
- Aerohive AP as RADIUS Proxy
- Aerohive AP as RADIUS & DHCP server
- Centralized view of all configuration objects
- Ability to bulk edit device properties
- Ability to schedule firmware upgrade
- Bonjour gateway support
- Command Line Interface access to Aerohive devices
- Support for select Dell N-series switches
- Active directory/LDAP
- IPv6 support
- Syslog and SNMP server configuration
- Layer 2 support for Aerohive VPN Gateway Virtual Appliance (VGVA)
- Auto provisioning
- SSID settings override at AP level

Centralized Policy Management

- Device classification by location & timezone
- Customer application definition
- Client classification by location, OS type, MAC address
- Multiple user profiles for each SSID
- Time-based firewall and QoS policy
- Application, network, and MAC Layer firewall policy rules
- WIPS policy for rogue AP detection

Guest Access

- On-boarding and management of visitor and employee personal devices
- Seven on-boarding workflows: Captive Web Portal, Kiosk and Guest Check-In applications
- Private PSK (PPSK), PSK and 802.1X (RADIUS) authentication

Dashboard

- Graphical widgets and status cards with drill-down capabilities
- Time range slider on dashboard for historical view
- 360° views of Aerohive network policies, AP, client devices, users and applications
- Global search function by network policy, MAC address, serial number, user or application name
- 7 days of historic monitoring and reporting data
- Interactive Network Summary Report with easy sharing
- Savable contextual filters by location, SSID, policy, user profile, and client OS type

Monitoring

- WIPs history report
- Drill down capability from client list to client 360 view
- Device list with rich utilities for advanced configuration and investigation
- Real time client list with SNR, RSSI, data usage and connection status
- Simplified device search by service tag, serial number, device type (APs and switches) and other criteria
- Savable and reusable filters shared across dashboard and monitor
- Alarm and event lists with historical and real-time data
- PCI 3.1 compliant reporting
- Rogue AP and rogue client monitoring
- Near real-time KPI values
- Map based navigation

Troubleshooting

- Help-desk optimized interface with problem summary and suggested remedy
- Dedicated Helpdesk user role for simple access management
- Real-time troubleshooting with probe messages and stage filters
- Historical troubleshooting with automatically detected issues
- Mark issue resolved or escalate issue with email notification
- Built-in command line interface
- RADIUS test
- AP technical data download
- Email alerts for AP status changes, high CPU utilization, high memory usage

Security and Privacy

- Role based access control
- Customer and network data is private and secure
- No customer data traverses Aerohive’s network
- SSO for NG administrators (AD or GSuite credentials)
- Optional multi-factor authentication with Google Authenticator

Supported Languages

- English, French, Japanese

Supported Hardware Platforms

AP: 120, 121, 122, 130, 141, 150W, 170, 230, 245x, 250, 320, 330, 340, 350, 370, 390, 550, 1130  
 SR: 2024P, 2124P, 2148P, 2208P, 2224P, 2324P, 2348P

Recommended Hardware Specifications (Per Host)

- For up to 500 devices
- CPU: Xeon E3-1220 v5, 3.0GHz, 8MB cache or better
  - 1 physical CPU
  - 4 cores, 4 threads
  - 16 GB memory
  - 1 TB storage (local storage, prefer SSD)
- For up to 2,000 devices
- CPU: Xeon E5-2620 v4, 2.1GHz, 20MB cache or better
  - 1 physical CPU
  - 8 cores, 16 threads
  - 32 GB memory
  - 1 TB storage (local storage, prefer SSD)

Required Third-Party Software

- vSphere Essentials 6.0

Capacity

HiveManager NG Virtual Appliance supports up to 2,000 network devices. HiveManager NG Virtual Appliance can be deployed on industry-standard hardware with sufficient compute and storage capacity.

Please contact your Aerohive sales representative for guidance on hardware and software specifications.

PRODUCT SKUS

SKU	Description
AH-HMNG-SVA	HiveManager NG Virtual Appliance (single instance) delivered via download
AH-NGCS-SL-1YR/3YR/5YR	HiveManager NG software subscription for 1 network device for 1, 3 or 5 years
AH-NG-LIC	HiveManager NG Perpetual License for 1 AP. Alternative to subscription, requires purchase of support service

Contact us today to learn how your organization can benefit from Aerohive networking solutions.

